



Rev. 04/2015

CHECK VALVE

For air vent valves.

CHECK VALVE

For air vent valves.



PRODUCTION RANGE

Code	Size	Connection	Finish
38.04.10	1/2" F x 1/2" M	MF UNI-EN-ISO 228	Nickel-plated brass
38.03.70 *	3/8" F x 3/8" M	MF UNI-EN-ISO 228	Brass
38.04.70 *	3/8" F x 1/2" M	MF UNI-EN-ISO 228	Brass

* Threaded connection with PTFE pre-gasket ring

DESCRIPTION - FIELD OF APPLICATION

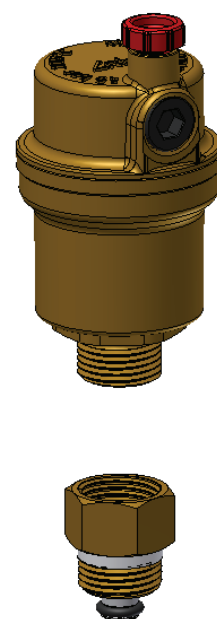
DESCRIPTION

The **RBM check valve** is intended to facilitate any maintenance work and inspection of the air vent device, without stopping the system. With the air vent valve disassembled, the check valve blocks the in-flow of water.

The hydraulic sealing with the air vent valve body is guaranteed by the o-ring sealing.

APPLICATION FIELD

Allows the automatic shut-off of air vent valves models **Vasa**, **Miniluft** and **Megaluft**.



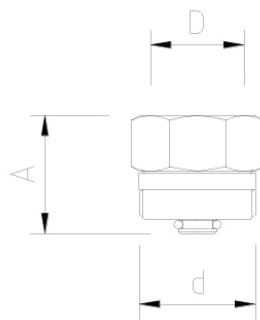
CONSTRUCTION FEATURES

Body	Brass CW 617N UNI EN 12165
Elastomers used	EPDM and NBR
Threaded connections	MF UNI-EN-ISO 228

TECHNICAL FEATURES

Usable fluid	Water - Water + Glycol 30%
Maximum fluid temperature	100 °C
Maximum operating pressure	6 bar (600 kPa)

DIMENSIONAL FEATURES



Code	d	D	A [mm]
38.04.10	1/2"	1/2"	28
38.03.70	3/8" *	3/8"	23
38.04.70	1/2" *	3/8"	23

* Threaded connection with PTFE pre-gasket ring

SPECIFICATION ITEMS

SERIES 38

Check valve for the automatic shut-off of air vent valves, models Vasa, Miniluft and Megaluft. Brass body, ethylene-propylene elastomer seals. Maximum operating temperature 100 °C. Maximum operating pressure 6 bar.

RBM spa reserves the right to improve and change the described products and related technical data at any moment and without prior notice: always refer to the instructions attached with the supplied components; this sheet is an aid, should the instructions be extremely schematic. Our technical office is always at your disposal for any doubt, problem or explanation.